

Genome-wide meta-analysis of cerebral white matter hyperintensities in patients with stroke

OPEN

Matthew Traylor, PhD*
Cathy R. Zhang, MA*
Poneh Adib-Samii, MBBS
William J. Devan, BS
Owen E. Parsons, MSc
Silvia Lanfranconi, MD
Sarah Gregory, PhD
Lisa Cloonan, BA
Guido J. Falcone, MD
Farid Radmanesh, MD
Kaitlin Fitzpatrick, BSc
Allison Kanakis, MD
Thomas R. Barrick, PhD
Barry Moynihan, MD
Cathryn M. Lewis, PhD
Giorgio B. Boncoraglio, MD
Robin Lemmens, MD
Vincent Thijs, MD
Cathie Sudlow, MD, PhD
Joanna Wardlaw, FMedSci
Peter M. Rothwell, FMedSci
James F. Meschia, MD
Bradford B. Worrall, MD
Christopher Levi, MD
Steve Bevan, PhD
Karen L. Furie, MD
Martin Dichgans, MD
Jonathan Rosand, MD
Hugh S. Markus, DM*
Natalia Rost, MD*
On behalf of the
International Stroke
Genetics Consortium

Correspondence to
Dr. Traylor:
mt628@medschl.cam.ac.uk

Supplemental data
at Neurology.org

ABSTRACT

Objective: For 3,670 stroke patients from the United Kingdom, United States, Australia, Belgium, and Italy, we performed a genome-wide meta-analysis of white matter hyperintensity volumes (WMHV) on data imputed to the 1000 Genomes reference dataset to provide insights into disease mechanisms.

Methods: We first sought to identify genetic associations with white matter hyperintensities in a stroke population, and then examined whether genetic loci previously linked to WMHV in community populations are also associated in stroke patients. Having established that genetic associations are shared between the 2 populations, we performed a meta-analysis testing which associations with WMHV in stroke-free populations are associated overall when combined with stroke populations.

Results: There were no associations at genome-wide significance with WMHV in stroke patients. All previously reported genome-wide significant associations with WMHV in community populations shared direction of effect in stroke patients. In a meta-analysis of the genome-wide significant and suggestive loci ($p < 5 \times 10^{-6}$) from community populations (15 single nucleotide polymorphisms in total) and from stroke patients, 6 independent loci were associated with WMHV in both populations. Four of these are novel associations at the genome-wide level (rs72934505 [NBEAL1], $p = 2.2 \times 10^{-8}$; rs941898 [EVL], $p = 4.0 \times 10^{-8}$; rs962888 [C1QL1], $p = 1.1 \times 10^{-8}$; rs9515201 [COL4A2], $p = 6.9 \times 10^{-9}$).

Conclusions: Genetic associations with WMHV are shared in otherwise healthy individuals and patients with stroke, indicating common genetic susceptibility in cerebral small vessel disease.

Neurology® 2016;86:146–153

GLOSSARY

FLAIR = fluid-attenuated inversion recovery; **ROI** = region of interest; **SNP** = single nucleotide polymorphism; **TICV** = total intracranial volume; **WMH** = white matter hyperintensities; **WMHV** = white matter hyperintensity volume; **WTCCC2** = Wellcome Trust Case Control Consortium-2.

White matter hyperintensities (WMH) on T2-weighted MRI are associated with increasing age and cardiovascular risk factors, particularly hypertension, and are predictive of both stroke and dementia in prospective community populations.¹ Severe confluent WMH are often found in patients presenting with stroke, and are more common in patients with the small vessel stroke subtype.² Furthermore, in these patients, WMH burden is linked to poor clinical outcomes after stroke.^{3,4} Understanding disease mechanisms that contribute to WMH could lead to advances in prevention, treatment, and rehabilitation of disability related to vascular cognitive impairment, age-related functional decline, and stroke.

Twin and family history studies suggest a significant genetic component to WMH. Heritability estimates range from 55% to 80%,^{5–8} suggesting that a moderate to large proportion of the disease risk can be attributed to genetic effects. The heritability attributed to common single nucleotide polymorphisms (SNPs) has been estimated to be between 13% and 45%.⁹ Previous genome-wide analyses have focused on the genetic influence on WMH in community populations,^{10,11} and a recent meta-analysis identified 8 regions associated with the disease.¹² One

*These authors contributed equally to this work.

Authors' affiliations are listed at the end of the article.

Coinvestigators are listed on the *Neurology*® Web site at Neurology.org.

Go to Neurology.org for full disclosures. Funding information and disclosures deemed relevant by the authors, if any, are provided at the end of the article. The Article Processing Charge was paid by Wellcome Trust.

This is an open access article distributed under the terms of the Creative Commons Attribution License 4.0 (CC BY), which permits unrestricted use, distribution, and reproduction in any medium, provided the original work is properly cited.

might expect genetic risk factors for WMH in community populations to be similar to those that confer increased risk of WMH in stroke patients. However, the underlying pathology of WMH is heterogeneous, with small punctate lesions being associated with mixed causes, whereas more confluent areas often seen in stroke patients correspond primarily to small vessel disease.¹³ Therefore, it is unclear whether the lesions underlying WMH in the general population are pathologically distinct from the confluent lesions frequently observed in patients with stroke.

In this analysis, we investigated the role of the genetic contribution to WMH volumes (WMHV) in patients with ischemic stroke. We initially performed a genome-wide meta-analysis of WMHV in stroke patients with the aim of identifying novel associations. Second, we determined whether similar genetic factors contributed to WMHV in community populations and stroke patients. Finally, having established shared genetic factors in the 2 datasets, we performed a meta-analysis of the published associations from community populations with our dataset to identify genetic associations that are in common in the 2 populations.

METHODS Study populations. Ischemic stroke populations were enrolled through hospital-based studies between 1995 and 2013. Characteristics of the study populations are given in table 1; full details are given in the supplementary material on the *Neurology*[®] Web site at Neurology.org. Patients with cerebral autosomal dominant arteriopathy with subcortical infarcts and leukoencephalopathy or any other suspected monogenic cause of stroke, vasculitis, or any other nonischemic cause of WMH including demyelinating and mitochondrial disorders were excluded from analyses.

Standard protocol approvals, registrations, and patient consents. An institutional review board or regional review board approved the use of human subjects in each of the study populations. All patients gave informed consent.

Neuroimaging analysis. MRI scans were acquired as part of routine clinical practice for evaluation of ischemic stroke (table e-1). Fluid-attenuated inversion recovery (FLAIR) sequences were primarily used for WMH volumetric analysis; however, in their absence, T2-weighted sequences were used (Wellcome Trust Case Control Consortium-2 [WTCCC2], Oxford, and WTCCC2, Munich, only). In all scans, to avoid confounding by hyperintense signal due to acute stroke, WMHV was assessed quantitatively in the hemisphere contralateral to the acute infarction. Chronic lacunar infarcts were identified using standard criteria as low signal on T1 or FLAIR images and were excluded from WMHV estimates.¹⁴ Trained raters blinded

to all patient information analyzed anonymized MRI scans. All supratentorial white matter and deep gray matter lesions were included in WMHV with the exception of WMH corresponding to infarcts, both lacunar and territorial.² MRIs with excessive movement artefact, incomplete brain coverage, or bihemispheric infarcts (other than lacunar) were excluded.

To account for interindividual variability in head size, an estimate of total intracranial volume (TICV) was derived using site-specific volumetric methodology, as follows. MRIs from the Massachusetts General Hospital, Ischemic Stroke Genetics Study, and Australian Stroke Genetics Collaborative studies were analyzed in Boston. Scans from the Siblings with Ischaemic Stroke Study were analyzed in the same way at the University of Virginia by the Boston-trained rater. FLAIR sequences were analyzed using an MRIcro semiautomated method as previously described.² Using operator-mediated quality assurances, overlapping regions of interest (ROIs) corresponding to WMH produced the final maps for WMHV calculation. Intracranial area was derived as a validated marker of TICV as the average of 2 midsagittal slices traced using anatomical landmarks on T1 sequences.¹⁵

The WTCCC2, GENESIS, SGUL, Leuven, and Milan cohorts were analyzed in London using DISPunc semiautomated lesion drawing software.¹⁶ A seed at the lesion border was first marked manually, and then outlined automatically based on the signal intensity gradient. Each WMH ROI was visually inspected and manually corrected as required. To estimate TICV, T2-weighted and, in their absence, FLAIR sequences were analyzed using an automated segmentation program, SIENAX,¹⁷ which calculates the total volume of CSF and gray and white matter volumes.

WMHV quantification agreement across the 2 main rating centers was performed for 50 randomly selected scans; agreement was very good (intraclass correlation coefficient 0.95, confidence interval 0.91–0.97, $n = 50$).

Phenotype definition. To calculate the phenotype used in the genetic analysis, WMHV were doubled to obtain a whole brain estimate. This volume was then multiplied by the ratio of TICV (or intracranial area) to the mean TICV (or intracranial area) for the study, thereby correcting for natural differences in head size. The values were natural log transformed and the resulting \ln (WMHV) values were entered into a linear regression model including age, sex, and the first 2 ancestry-informative principal components. To ensure the phenotype was normally distributed, the residuals from the model were then z -transformed and used as the WMHV phenotype in the genetic analysis.

Genome-wide genotyping and imputation. Genotyping of all cohorts was performed on commercially available arrays from Affymetrix (Santa Clara, CA) or Illumina (San Diego, CA) (table e-2). All cohorts performed extensive quality control steps prior to imputation, removing SNPs showing significant departure from Hardy-Weinberg equilibrium, high levels of missingness, or low minor allele frequency. Individuals were removed who did not segregate with Hapmap II European populations based on ancestry informative principal component analysis using EIGENSTRAT or multidimensional scaling in PLINK.^{18,19} Additionally, individuals showing cryptic relatedness or having high levels of missingness or heterozygosity were excluded. All datasets were imputed to 1000 Genomes integrated variant set (March 2012) using IMPUTE v2.²⁰

Genome-wide association analysis of WMHV in stroke patients. To discover novel associations between WMHV and each autosomal SNP, we performed linear regression of WMHV

Table 1 Cohort characteristics

Study group	No.	Mean age, y (SD)	% Male	% Hypertensive	Genomic inflation λ (λ_{1000})	No. SNPs
Milan	151	57 (14)	60	57	1.01	7,959,374
WTCCC2-Edinburgh	64	68 (13)	50	62	0.99	7,875,762
WTCCC2-Munich FLAIR	447	66 (12)	66	72	1.00	8,287,283
WTCCC2-Munich T2	203	67 (12)	55	67	0.99	8,194,948
WTCCC2-Oxford FLAIR	65	65 (15)	54	65	1.03	7,891,788
WTCCC2-Oxford T2	75	67 (13)	59	68	1.02	7,979,101
WTCCC2-SGUL	323	70 (14)	63	77	0.99	8,256,772
GENESIS 1	121	67 (14)	67	62	0.99	7,554,414
GENESIS 2	228	69 (15)	58	76	0.99	7,663,158
SGUL 1	70	70 (13)	61	61	0.98	7,278,977
SGUL 2	57	68 (14)	58	72	0.97	7,399,139
DNA lacunar	303	57 (9)	72	68	0.99	7,679,415
Leuven	361	66 (15)	58	59	1.01	8,741,082
MGH-Affymetrix	476	67 (14)	60	64	1.09	7,973,366
MGH-Omni	84	64 (15)	63	68	1.02	8,234,605
MGH-Illumina	228	66 (15)	64	61	1.00	8,144,043
ASGC	96	65 (13)	57	77	1.01	8,113,545
ISGS	207	68 (14)	62	61	1.01	7,985,259
SWISS	111	66 (11)	48	74	1.02	7,927,980
Overall	3,670				1.04 (1.01)	7,567,914

Abbreviations: λ = genomic inflation level; ASGC = Australian Stroke Genetics Collaborative; FLAIR = fluid-attenuated inversion recovery; ISGS = Ischemic Stroke Genetics Study; MGH = Massachusetts General Hospital; SGUL = St. George's University of London; SNP = single nucleotide polymorphism; SWISS = Siblings With Ischaemic Stroke Study; WTCCC2 = Wellcome Trust Case Control Consortium-2.

on genotype dosages using PLINK v1.07.¹⁹ SNPs with PLINK INFO <0.7 or MAF <0.01 were removed from further analyses. We used genomic inflation to evaluate inflation of test statistics in each study group.²¹ Results across all study groups were combined using a fixed-effects inverse variance weighted method using METAL.²² To control for any excess signal that might result from study-wise inflation of p values, we performed genomic control correction, multiplying the standard errors from each study by the square root of the genomic inflation factor.²¹ Heterogeneity was assessed using Cochran q statistic. Following the meta-analysis, we considered only SNPs present in more than 12 study groups, and with heterogeneity $p > 0.001$, for analysis. We set the significance threshold to $p < 5 \times 10^{-8}$. We used λ_{1000} to evaluate inflation at the meta-analysis level.²³ We had 80% power to detect a variant explaining 1.1% of the trait variance (figure e-1).

Analysis of SNPs associated with WMH in community-based populations. To determine whether SNPs contributing to WMHV in community populations were associated with WMHV in stroke patients, we evaluated each SNP reported as being associated with WMH in healthy adults in a recent publication,¹² testing if the SNP was associated with WMHV in ischemic stroke patients. All 17,936 individuals in the previous study were stroke-free and nonoverlapping with the samples studied here. We performed this analysis first for all genome-wide associated loci from the publication, and second for loci reported at $p < 1 \times 10^{-5}$ in European populations or overall.

We set a significance threshold at $p = 0.0033$, Bonferroni correcting for the 15 SNPs analyzed. We had 80% power to detect any associations that explain 0.4% of the trait variance. In addition, we tested whether there was evidence overall that genetic susceptibility factors were shared between the 2 populations. We used a binomial test to evaluate whether an excess of the 8 genome-wide significant SNPs shared direction of effect in community populations and stroke patients, and then extended this to the 15 genome-wide significant loci and loci reported at $p < 1 \times 10^{-5}$ in European populations or overall.

Meta-analysis of stroke samples and published population-based samples. Having established that genetic factors were shared between community populations and stroke patients, we evaluated the overall evidence that each of the 15 previously reported SNPs (8 genome-wide significant, 7 suggestive) were associated with WMHV in both populations. We combined p values from the 2 sources using Stouffer z -score weighted method with equal weights, classifying SNPs with $p < 0.05$ in both populations and reaching $p < 5 \times 10^{-8}$ overall as significantly associated with WMH in both populations. We were not able to perform the reciprocal analysis, testing if suggestive associations with WMH in stroke patients were associated with WMH in stroke-free individuals, due to restrictions on access to the required summary level data. We then evaluated novel genome-wide associations in available databases to test for evidence that affects regulation of genes (RegulomeDB)²⁴ or directly affects gene expression (GTEx).²⁵

RESULTS Study populations. Clinical characteristics of all participating cohorts are given in table 1. In total, 3,670 individuals of European ancestry were included in the 19 study groups.

Genome-wide association analysis of WMHV in stroke patients. With the exception of one study group, genomic inflation was well-controlled ($\lambda \leq 1.03$, table 1). Following quality control procedures, 7,567,914 autosomal SNPs remained for analysis. Genomic inflation was well-controlled at the meta-analysis level ($\lambda = 1.04$, $\lambda_{1000} = 1.01$; figure e-2). No SNP reached the significance level (figure 1), although a number of loci reached $p < 5 \times 10^{-6}$. These are detailed in table e-3, and regional plots of these loci are provided in figure e-3. All odds ratios reported are per 1 SD change in normally distributed WMHV after accounting for age, sex, and ancestry-informative principal components.

Analysis of SNPs associated with WMH in community-based populations. Eight independent SNPs have been associated with WMH in community populations.¹² We evaluated each of these in our dataset of stroke patients. The direction of effect of all 8 associations was consistent with the direction in our study. This alone is unlikely to be due to chance ($p = 7.8 \times 10^{-3}$ from binomial test). For specific SNPs, no genome-wide associations from community populations reached our significance threshold, although all had $p \leq 0.24$ for association with WMH in stroke patients, and 3 loci reached a nominal significance level ($p < 0.05$) in stroke patients (rs7214628 [TRIM65], $p = 0.015$; rs78857879 [EFEMP1], $p = 0.0056$; rs2984613 [PMF1-BGLAP], $p = 0.017$).

Additionally, 10 loci were reported as suggestively significant in the same recent publication,¹² with

$p < 1 \times 10^{-5}$ in Europeans or overall. Three of these were rare ($MAF \leq 0.02$), and were not imputed with enough accuracy to be analyzed in our dataset (rs186314186, rs150695384, rs117126031). We evaluated each of the 7 remaining associations in our population. Of these, 4 passed our significance threshold (table 2). One locus was nonsignificant and in the opposite direction in our study (rs2883428, $p = 0.17$). In total, 14 of the 15 genome-wide and suggestively significant loci shared direction between community individuals and stroke patients ($p = 9.8 \times 10^{-4}$ from binomial test).

In addition, we searched for other publications describing associations with any of the SNPs or genes studied using the following search terms in PubMed: (SNP or gene) and (white matter or leukoaraiosis or small vessel disease). No relevant publications were identified.

Meta-analysis of stroke samples and published population-based samples. When combining our results in stroke patients with the 15 previously reported associations using Stouffer z -score meta-analysis, 6 associations reached genome-wide significance overall and had $p < 0.05$ in both studies (table 2). Four of these are novel associations at genome-wide significance (rs72934505 [NBEAL1], $p = 2.2 \times 10^{-8}$; rs941898 [EVL], $p = 4.0 \times 10^{-8}$; rs962888 [C1QL1], $p = 1.1 \times 10^{-8}$; rs9515201 [COL4A2], $p = 6.9 \times 10^{-9}$), all of which showed good consistency across the 19 cohorts (figure e-4). The same 6 associations reached genome-wide significance using an alternative meta-analysis approach (Fisher method). The association with COL4A2 (rs9515201) is in strong LD ($r^2 > 0.8$) with SNPs previously reported to be associated with cerebral small vessel disease, and is therefore likely to represent the same locus.²⁶

Figure 1 Association of genome-wide single nucleotide polymorphisms with white matter hyperintensity volume in ischemic stroke patients by genomic position

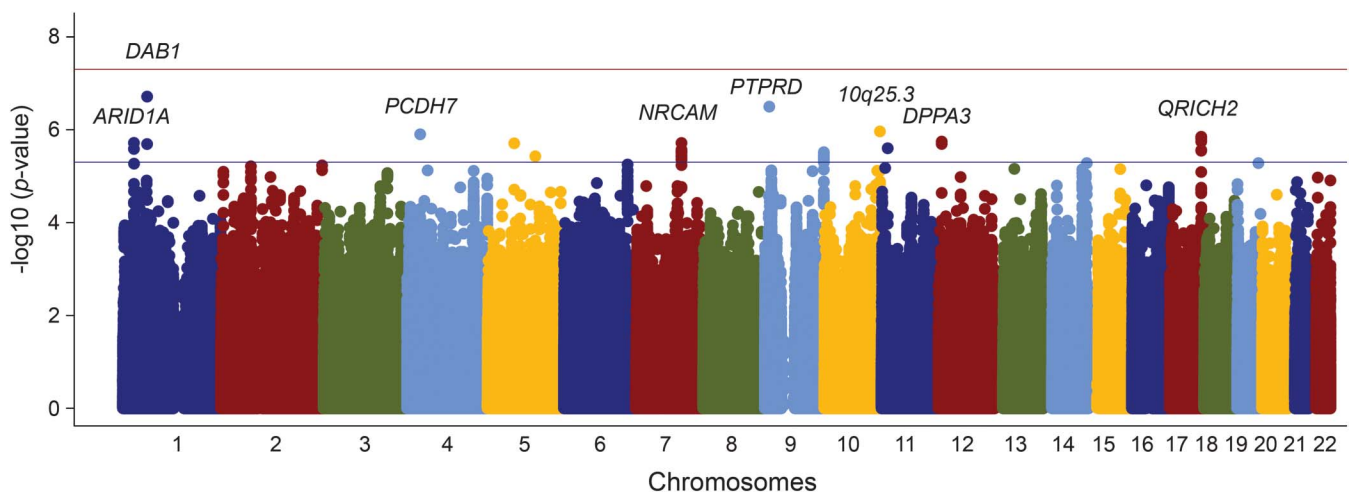


Table 2 Association of WMH-associated SNPs from community populations in stroke patients

SNP	CHR:BP	Nearest gene	RA	OA	RAF	OR (95% CI) in stroke patients	p Value in stroke patients	p Value for Europeans in community populations ¹²	Overall p value
rs7214628	17:73,882,148	TRIM65	G	A	0.20	1.08 (1.01-1.14)	0.015	2.7×10^{-19}	2.4×10^{-15a}
rs72848980	10:105,319,409	NEURL	G	A	0.83	1.04 (0.97-1.11)	0.25	6.3×10^{-9}	3.4×10^{-6}
rs7894407	10:105,176,179	PDCD11	T	C	0.65	1.02 (0.97-1.07)	0.34	1.6×10^{-9}	3.8×10^{-6}
rs12357919	10:105,438,112	SH3PXD2A	T	C	0.83	1.07 (1.00-1.13)	0.068	1.9×10^{-8}	3.8×10^{-7}
rs7909791	10:105,613,178	SH3PXD2A	A	C	0.36	1.05 (0.99-1.09)	0.069	1.7×10^{-8}	3.7×10^{-8}
rs78857879	2:56,135,099	EFEMP1	A	G	0.10	1.11 (1.03-1.21)	0.0056	2.9×10^{-7}	5.0×10^{-8a}
rs2984613	1:156,197,380	PMF1-BGLAP	C	T	0.66	1.06 (1.01-1.12)	0.017	1.4×10^{-5}	4.1×10^{-6}
rs11679640	2:43,141,485	HAAO	C	G	0.80	1.04 (0.99-1.11)	0.13	4.4×10^{-8}	2.3×10^{-6}
rs72934505	2:203,916,487	NBEAL1	T	G	0.88	1.10 (1.03-1.18)	0.0076	5.4×10^{-8}	2.2×10^{-8b}
rs17148926	5:121,510,586	LOC10050584	A	C	0.83	1.11 (1.04-1.18)	0.0010	1.0×10^{-5}	9.9×10^{-8}
rs941898	14:100,599,437	EVL	G	T	0.26	1.10 (1.05-1.16)	2.3×10^{-4}	1.6×10^{-6}	4.0×10^{-8b}
rs6942756	7:128,886,821	AHCYL2	G	T	0.26	1.03 (0.98-1.09)	0.24	8.0×10^{-7}	5.0×10^{-5}
rs2883428	1:239,571,364	XM_0039600	G	A	0.25	0.96 (0.91-1.02)	0.17	4.0×10^{-7}	1.6×10^{-5}
rs962888	17:43,059,071	C1QL1	G	A	0.71	1.09 (1.03-1.15)	0.0021	2.2×10^{-7}	1.1×10^{-8b}
rs9515201	13:111,040,798	COL4A2	A	C	0.32	1.09 (1.04-1.15)	7.0×10^{-4}	6.7×10^{-7}	6.9×10^{-9b}

Abbreviations: BP = base position (hg19); CHR = chromosome; CI = confidence interval; OA = other allele; OR = odds ratio; RA = reference allele; RAF = reference allele frequency; SNP = single nucleotide polymorphism; WMH = white matter hyperintensities.

The top 8 SNPs are genome-wide significant in community populations overall (including all ancestries) in a previous publication,¹² while the bottom 7 are suggestively significant in community populations. The *p* values reported here are for Caucasian populations only. The reported reference allele is the effect allele in community populations.

^a Associated at $p < 5 \times 10^{-8}$ overall and with $p < 0.05$ in both populations.

^b Novel association at genome-wide level. The overall *p* value gives the results of Fisher meta-analysis of the *p* values from community populations and stroke patients.

For each of these 4 novel associations, we queried the RegulomeDB database and GTEx portal for evidence that the SNPs affect DNA binding or expression of any mRNA molecule (figure e-5).^{24,25} rs962888 lies 25 Kb downstream from *CIQL1*; however, interrogation of GTEx portal showed that the common allele (G, risk allele) of the SNP decreases expression of elongation factor tu GTP binding domain containing 2 (EFTUD2) in tibial arteries, 100 kb away ($p = 5.3 \times 10^{-6}$). Data from RegulomeDB support this observation, as the SNP overlies DNase-seq, FAIRE-seq, and CHIP-seq peaks in numerous tissues from ENCODE.²⁷ Similarly, the common allele (T, risk allele) of rs72934505 increases expression of the nearby gene *NBEAL1* in tibial arteries in GTEx ($p = 2.5 \times 10^{-11}$), and also decreases expression of islet cell autoantigen 1.69 kDa-Like (*ICA1L*) in the thyroid ($p = 6.6 \times 10^{-6}$), 200 kb away. No significant eQTLs were identified for rs941898 or rs9515201, but both overlap numerous CHIP-seq and DNase-seq peaks from ENCODE, indicating they may have a regulatory function.

DISCUSSION We report the first phase of a collaborative genome-wide meta-analysis of WMHV in

stroke patients. We did not identify any associations with WMHV in ischemic stroke patients at the genome-wide significance level. The most likely explanation for this is lack of power. We had 80% power to identify a variant explaining 1.1% of the trait variance (supplementary material), suggesting that it is unlikely that any common variants explain more than this proportion of the variance of WMH in stroke patients. However, we cannot rule out the existence of rare variants conferring a considerable proportion of disease risk.

We found strong evidence that many of the same genome-wide associations with WMHV in healthy individuals influence WMHV in stroke patients. All genome-wide significant associations with WMHV shared direction of effect in our study and 3 reached a nominal significance threshold. More convincing is that of the 7 suggestive associations reported with WMH in healthy individuals, 4 were significantly associated with WMH in stroke patients. A meta-analysis of these SNPs in 21,606 subjects suggests that 4 of these loci are linked to WMH in community populations and stroke patients at genome-wide significance. Two of these associations influence expression of nearby gene products (*NBEAL1/ICA1L*

[rs72934505] and *EFTUD2* [rs962888]). A genome-wide significant association with rs9515201, located in an intron of *COL4A2*, which encodes collagen 4 subunit 2, was also identified. This association is particularly interesting as rare mutations in *COL4A2* and the closely related *COL4A1* protein lead to small vessel disease and hemorrhagic stroke,^{28–30} and common variants in close LD with this SNP ($r^2 > 0.8$) have been linked to sporadic small vessel disease.²⁶

The observation that genetic risk factors for WMH in community populations also influence WMH in stroke patients has implications. It suggests that the white matter changes seen on the brain MRI scans of otherwise healthy elderly reflect a similar disease process as the more severe forms that underlie cerebral small vessel disease in patients with stroke. Previous studies have indicated heterogeneity in WMH pathology: our results do not preclude this possibility, but suggest that many of the same genetic factors contribute to both pathologies.

Our study has several strengths. Protocols were uniformly employed across analyses, including imputation to the same reference build across all study groups, using the same software. Similarly, analyses were performed using the same software on the same phenotype, derived in the same way. We performed volumetric analysis of all MRI scans to quantify WMHV, which has strengths over rating scales, which are known to have ceiling effects.¹⁴ Inter-rater agreement between the 2 coordinating centers was shown to be good. WMHV was quantified using semiautomated volumetric protocols validated for use in patients with stroke and clinical grade MRI scans.

Our study also has limitations. Large-scale collaborative GWAS such as that undertaken here necessarily combine studies with some degree of phenotypic variability. Differences in environmental exposures, possibly resulting in epigenetic modifications, may contribute to such variability, which could alter the results. We identified 4 novel associations at genome-wide significance when combined with previous publications. However, we have not provided replication of these findings and therefore further evidence will be necessary to verify these associations with WMHV. MRI used in the analyses were drawn from a number of centers, with varying image quality. Therefore, to minimize bias arising from differing image quality, we quantified WMHV per study group and meta-analyzed the results. This approach may limit our ability to detect associations with low frequency variants due to small sample sizes in some study groups. The majority of MRI scans used were from FLAIR sequences. However, where these were unavailable, we used T2-weighted images, which are less sensitive to white matter changes. Such differences in sensitivity may

affect quantification of WMHV across study groups, although future studies that involve centralized volumetric MRI analysis pipelines, such as those currently in development, may account for this variability. In this analysis, we considered all subtypes of stroke together as we were underpowered to investigate subtype-specific influences on WMH. It is possible that causes of WMH may differ by stroke subtype, but larger studies with sufficient power will be required before this issue can be addressed adequately. Similarly, it has been hypothesized that periventricular and deep WMH might have distinct underlying pathophysiology. In this analysis, we considered total WMHV, rather than treating these regions separately; our lesion volume analysis did not differentiate into these 2 regions. Further analyses should address this area.

We have shown that the age-related white matter changes seen in otherwise healthy populations share genetic susceptibility with the extensive lesions that underlie cerebral small vessel disease. We report 6 independent loci that are associated with WMHV in healthy individuals as well as stroke patients, 4 of which are novel associations at the genome-wide level. Our results suggest that a full genome-wide meta-analysis of available cohorts of WMH in ischemic stroke patients and community populations is likely to uncover further associations.

AUTHOR AFFILIATIONS

From the Department of Clinical Neurosciences (M.T., H.S.M.) and the Autism Research Centre (O.E.P.), University of Cambridge, UK; the J. Philip Kistler Stroke Research Center (C.R.Z., W.J.D., L.C., G.J.F., K.F., A.K., N.R.) and the Center for Human Genetic Research (W.J.D., G.J.F., F.R., J.R., N.R.), Department of Neurology, Massachusetts General Hospital, Boston; the Neurosciences Research Centre (P.A.-S., S.G., T.R.B., B.M.), St George's, University of London, UK; the Neurology Unit (S.L., J.R.), IRCCS Ca' Granda Ospedale Maggiore Policlinico, Milan, Italy; Program in Medical and Population Genetics (F.R.), Broad Institute, Cambridge, MA; the Department of Medical & Molecular Genetics (C.M.L.) and the Social, Genetic and Developmental Psychiatry Centre, Institute of Psychiatry (C.M.L.), King's College London, UK; the Department of Cerebrovascular Diseases (G.B.B.), Fondazione IRCCS Istituto Neurologico "Carlo Besta," Milan, Italy; KU Leuven, University of Leuven, the Department of Neurosciences, Experimental Neurology and Leuven Research Institute for Neuroscience and Disease (R.L., V.T.); University Hospitals Leuven, the Department of Neurology (R.L., V.T.); VIB, Vesalius Research Center, Laboratory of Neurobiology (R.L., V.T.), Leuven, Belgium; Austin Health and Melbourne Brain Center (V.T.), Florey Institute of Neuroscience and Mental Health, University of Melbourne, Heidelberg, Victoria, Australia; the Division of Clinical Neurosciences, Neuroimaging Sciences and Institute of Genetics and Molecular Medicine (C.S.), and Neuroimaging Sciences, Centre for Clinical Brain Sciences (J.W.), University of Edinburgh, UK; the Stroke Prevention Research Unit (P.M.R.), Nuffield Department of Neuroscience, University of Oxford, UK; the Department of Neurology (J.F.M.), Mayo Clinic, Jacksonville, FL; the Departments of Neurology and Public Health Sciences (B.B.W.), University of Virginia, Charlottesville; the Centre for Clinical Epidemiology and Biostatistics (C.L.), Hunter Medical Research Institute and School of Medicine and Public Health, University of Newcastle, NSW, Australia; School of Life Science (S.B.), University of Lincoln, Lincoln, UK; the Department of Neurology (K.L.F.), Rhode Island Hospital, Alpert Medical School of Brown University, Providence; the Institute for Stroke and Dementia

AUTHOR CONTRIBUTIONS

Matthew Traylor: drafting/revising the manuscript for content, study concept or design, analysis or interpretation of data, statistical analysis, accepts responsibility for conduct of research and final approval. Cathy Zhang: drafting/revising the manuscript for content, study concept or design, analysis or interpretation of data, statistical analysis, accepts responsibility for conduct of research and final approval. Ponch Adib-Samii: drafting/revising the manuscript for content, study concept or design, analysis or interpretation of data, statistical analysis, accepts responsibility for conduct of research and final approval. William Devan: drafting/revising the manuscript for content, study concept or design, analysis or interpretation of data, statistical analysis, accepts responsibility for conduct of research and final approval. Owen Parsons: drafting/revising the manuscript for content, analysis or interpretation of data, accepts responsibility for conduct of research and final approval. Silvia Lanfranconi: drafting/revising the manuscript for content, analysis or interpretation of data, accepts responsibility for conduct of research and final approval. Sarah Gregory: drafting/revising the manuscript for content, analysis or interpretation of data, accepts responsibility for conduct of research and final approval. Lisa Cloonan: drafting/revising the manuscript for content, analysis or interpretation of data, accepts responsibility for conduct of research and final approval. Guido Falcone: drafting/revising the manuscript for content, accepts responsibility for conduct of research and final approval. Farid Radmanesh: drafting/revising the manuscript for content, accepts responsibility for conduct of research and final approval. Kaitlin Fitzpatrick: drafting/revising the manuscript for content, accepts responsibility for conduct of research and final approval. Alison Kanakis: drafting/revising the manuscript for content, accepts responsibility for conduct of research and final approval. Tom Barrick: drafting/revising the manuscript for content, accepts responsibility for conduct of research and final approval. Barry Moynihan: drafting/revising the manuscript for content, acquisition of data, accepts responsibility for conduct of research and final approval. Cathryn Lewis: drafting/revising the manuscript for content, analysis or interpretation of data, accepts responsibility for conduct of research and final approval. Giorgio Boncoraglio: drafting/revising the manuscript for content, acquisition of data, accepts responsibility for conduct of research and final approval. Robin Lemmens: drafting/revising the manuscript for content, acquisition of data, accepts responsibility for conduct of research and final approval. Vincent Thijs: drafting/revising the manuscript for content, acquisition of data, accepts responsibility for conduct of research and final approval. Cathie Sudlow: drafting/revising the manuscript for content, acquisition of data, accepts responsibility for conduct of research and final approval. Joanna Wardlaw: drafting/revising the manuscript for content, acquisition of data, accepts responsibility for conduct of research and final approval. Peter Rothwell: drafting/revising the manuscript for content, acquisition of data, accepts responsibility for conduct of research and final approval. James Meschia: drafting/revising the manuscript for content, acquisition of data, accepts responsibility for conduct of research and final approval. Bradford Worall: drafting/revising the manuscript for content, acquisition of data, accepts responsibility for conduct of research and final approval. Chris Levi: drafting/revising the manuscript for content, acquisition of data, accepts responsibility for conduct of research and final approval. Karen Furie: drafting/revising the manuscript for content, acquisition of data, accepts responsibility for conduct of research and final approval. Steve Bevan: drafting/revising the manuscript for content, analysis or interpretation of data, accepts responsibility for conduct of research and final approval. Martin Dichgans: drafting/revising the manuscript for content, acquisition of data, accepts responsibility for conduct of research and final approval. Jonathan Rosand: drafting/revising the manuscript for content, study concept or design, acquisition of data, analysis or interpretation of data, study supervision or coordination, accepts responsibility for conduct of research and final approval. Hugh Markus: drafting/revising the manuscript for content, study concept or design, acquisition of data, analysis or interpretation of data, study supervision or coordination, accepts responsibility for conduct of research and final approval. Natalia Rost: drafting/revising the manuscript for content, study concept or design, acquisition of data, analysis or interpretation of data, study

supervision or coordination, accepts responsibility for conduct of research and final approval.

ACKNOWLEDGMENT

The authors thank Kristiina Rannikmae for comments on the manuscript; and Wellcome Trust Case Control Consortium 2.

STUDY FUNDING

Funding for collection, genotyping, and analysis of stroke samples was provided by Wellcome Trust Case Control Consortium-2, a functional genomics grant from the Wellcome Trust (DNA-Lacunar), the Stroke Association (DNA-Lacunar), the Intramural Research Program of National Institute of Ageing (Massachusetts General Hospital [MGH] and Ischemic Stroke Genetics Study [ISGS]), National Institute of Neurological Disorders and Stroke (Siblings With Ischemic Stroke Study, ISGS, and MGH), the American Heart Association/Bugher Foundation Centers for Stroke Prevention Research (MGH), Deane Institute for Integrative Study of Atrial Fibrillation and Stroke (MGH), National Health and Medical Research Council (Australian Stroke Genetics Collaborative), and Italian Ministry of Health (Milan). Additional support for sample collection came from the Medical Research Council, National Institute of Health Research Biomedical Research Centre and Acute Vascular Imaging Centre (Oxford), Wellcome Trust and Binks Trust (Edinburgh), and Vascular Dementia Research Foundation (Munich). M.T. is supported by a project grant from the Stroke Association (TSA 2013/01). H.S.M. is supported by an NIHR Senior Investigator award. H.S.M. and S.B. are supported by the NIHR Cambridge University Hospitals Comprehensive Biomedical Research Centre. V.T. and R.L. are supported by grants from FWO Flanders. P.R. holds NIHR and Wellcome Trust Senior Investigator Awards. P.A.S. is supported by an MRC Fellowship. C.M.L.'s research is supported by the National Institute for Health Research Biomedical Research Centre (BRC) based at Guy's and St Thomas' NHS Foundation Trust and King's College London, and the BRC for Mental Health at South London and Maudsley NHS Foundation Trust and King's College London.

DISCLOSURE

The authors report no disclosures relevant to the manuscript. Go to Neurology.org for full disclosures.

Received April 15, 2015. Accepted in final form September 9, 2015.

REFERENCES

1. DeBette S, Markus HS. The clinical importance of white matter hyperintensities on brain magnetic resonance imaging: systematic review and meta-analysis. *BMJ* 2010;341:c3666.
2. Rost NS, Rahman RM, Biffi A, et al. White matter hyperintensity volume is increased in small vessel stroke subtypes. *Neurology* 2010;75:1670–1677.
3. Ay H, Arsava EM, Rosand J, et al. Severity of leukoaraiosis and susceptibility to infarct growth in acute stroke. *Stroke* 2008;39:1409–1413.
4. Arsava EM, Rahman R, Rosand J, et al. Severity of leukoaraiosis correlates with clinical outcome after ischemic stroke. *Neurology* 2009;72:1403–1410.
5. Atwood LD, Wolf PA, Heard-Costa NL, et al. Genetic variation in white matter hyperintensity volume in the Framingham Study. *Stroke* 2004;35:1609–1613.
6. Turner ST, Jack CR, Fornage M, Mosley TH, Boerwinkle E, de Andrade M. Heritability of leukoaraiosis in hypertensive sibships. *Hypertension* 2004;43:483–487.
7. Carmelli D, DeCarli C, Swan GE, et al. Evidence for genetic variance in white matter hyperintensity volume in normal elderly male twins. *Stroke* 1998;29:1177–1181.

8. Opherk C, Peters N, Holtmannspotter M, Gschwendner A, Muller-Myhsok B, Dichgans M. Heritability of MRI lesion volume in CADASIL: evidence for genetic modifiers. *Stroke* 2006;37:2684–2689.
9. Adib-Samii P, Devan W, Traylor M, et al. Genetic architecture of white matter hyperintensities differs in hypertensive and nonhypertensive ischemic stroke. *Stroke* 2015;46:348–353.
10. Fornage M, Dobbie S, Bis JC, et al. Genome-wide association studies of cerebral white matter lesion burden: the CHARGE consortium. *Ann Neurol* 2011;69:928–939.
11. Lopez LM, Hill WD, Harris SE, et al. Genes from a translational analysis support a multifactorial nature of white matter hyperintensities. *Stroke* 2015;46:341–347.
12. Verhaaren BF, Dobbie S, Bis JC, et al. Multi-ethnic genome-wide association study of cerebral white matter hyperintensities on MRI. *Circ Cardiovasc Genet* 2015;8:398–409.
13. Schmidt R, Schmidt H, Haybaeck J, et al. Heterogeneity in age-related white matter changes. *Acta Neuropathol* 2011;122:171–185.
14. Wardlaw JM, Smith EE, Biessels GJ, et al. Neuroimaging standards for research into small vessel disease and its contribution to ageing and neurodegeneration. *Lancet Neurol* 2013;12:822–838.
15. Chen YW, Gurol ME, Rosand J, et al. Progression of white matter lesions and hemorrhages in cerebral amyloid angiopathy. *Neurology* 2006;67:83–87.
16. Grimaud J, Lai M, Thorpe J, et al. Quantification of MRI lesion load in multiple sclerosis: a comparison of three computer-assisted techniques. *Magn Reson Imaging* 1996;14:495–505.
17. Smith SM, Zhang Y, Jenkinson M, et al. Accurate, robust, and automated longitudinal and cross-sectional brain change analysis. *Neuroimage* 2002;17:479–489.
18. Price AL, Patterson NJ, Plenge RM, Weinblatt ME, Shadick NA, Reich D. Principal components analysis corrects for stratification in genome-wide association studies. *Nat Genet* 2006;38:904–909.
19. Purcell S, Neale B, Todd-Brown K, et al. PLINK: a tool set for whole-genome association and population-based linkage analyses. *Am J Hum Genet* 2007;81:559–575.
20. Abecasis GR, Auton A, Brooks LD, et al. An integrated map of genetic variation from 1,092 human genomes. *Nature* 2012;491:56–65.
21. Devlin B, Roeder K. Genomic control for association studies. *Biometrics* 1999;55:997–1004.
22. Willer CJ, Li Y, Abecasis GR. METAL: fast and efficient meta-analysis of genomewide association scans. *Bioinformatics* 2010;26:2190–2191.
23. de Bakker PI, Ferreira MA, Jia X, Neale BM, Raychaudhuri S, Voight BF. Practical aspects of imputation-driven meta-analysis of genome-wide association studies. *Hum Mol Genet* 2008;17:R122–R128.
24. Boyle AP, Hong EL, Hariharan M, et al. Annotation of functional variation in personal genomes using RegulomeDB. *Genome Res* 2012;22:1790–1797.
25. The Genotype-Tissue Expression (GTEx) Project. *Nat Genet* 2013;45:580–585.
26. Rannikmae K, Davies G, Thomson PA, et al. Common variation in COL4A1/COL4A2 is associated with sporadic cerebral small vessel disease. *Neurology* 2015;84:918–926.
27. Dunham I, Kundaje A, Aldred SF, et al. An integrated encyclopedia of DNA elements in the human genome. *Nature* 2012;489:57–74.
28. Gould DB, Phalan FC, van Mil SE, et al. Role of COL4A1 in small-vessel disease and hemorrhagic stroke. *N Engl J Med* 2006;354:1489–1496.
29. Lanfranconi S, Markus HS. COL4A1 mutations as a monogenic cause of cerebral small vessel disease: a systematic review. *Stroke* 2010;41:e513–e518.
30. Jeanne M, Labelle-Dumais C, Jorgensen J, et al. COL4A2 mutations impair COL4A1 and COL4A2 secretion and cause hemorrhagic stroke. *Am J Hum Genet* 2012;90:91–101.

WriteClick® rapid online correspondence

The editors encourage comments about recent articles through WriteClick:

Go to *Neurology.org* and click on the “WriteClick” tab at the top of the page. Responses will be posted within 72 hours of submission.

Before using WriteClick, remember the following:

- WriteClick is restricted to comments about studies published in *Neurology* within the last eight weeks
- Read previously posted comments; redundant comments will not be posted
- Your submission must be 200 words or less and have a maximum of five references; reference one must be the article on which you are commenting
- You can include a maximum of five authors (including yourself)

Neurology®

Genome-wide meta-analysis of cerebral white matter hyperintensities in patients with stroke

Matthew Traylor, Cathy R. Zhang, Poneh Adib-Samii, et al.

Neurology 2016;86:146-153 Published Online before print December 16, 2015

DOI 10.1212/WNL.0000000000002263

This information is current as of December 16, 2015

Neurology® is the official journal of the American Academy of Neurology. Published continuously since 1951, it is now a weekly with 48 issues per year. Copyright © 2015 American Academy of Neurology. All rights reserved. Print ISSN: 0028-3878. Online ISSN: 1526-632X.



Updated Information & Services	including high resolution figures, can be found at: http://www.neurology.org/content/86/2/146.full.html
Supplementary Material	Supplementary material can be found at: http://www.neurology.org/content/suppl/2015/12/16/WNL.0000000000002263.DC1.html http://www.neurology.org/content/suppl/2016/01/09/WNL.0000000000002263.DC2.html
References	This article cites 29 articles, 15 of which you can access for free at: http://www.neurology.org/content/86/2/146.full.html#ref-list-1
Subspecialty Collections	This article, along with others on similar topics, appears in the following collection(s): All Cerebrovascular disease/Stroke http://www.neurology.org/cgi/collection/all_cerebrovascular_disease_stroke All Cognitive Disorders/Dementia http://www.neurology.org/cgi/collection/all_cognitive_disorders_dementia All Genetics http://www.neurology.org/cgi/collection/all_genetics Association studies in genetics http://www.neurology.org/cgi/collection/association_studies_in_genetics MRI http://www.neurology.org/cgi/collection/mri
Permissions & Licensing	Information about reproducing this article in parts (figures, tables) or in its entirety can be found online at: http://www.neurology.org/misc/about.xhtml#permissions
Reprints	Information about ordering reprints can be found online: http://www.neurology.org/misc/addir.xhtml#reprintsus

Neurology® is the official journal of the American Academy of Neurology. Published continuously since 1951, it is now a weekly with 48 issues per year. Copyright © 2015 American Academy of Neurology. All rights reserved. Print ISSN: 0028-3878. Online ISSN: 1526-632X.

